



Association for the
Development of
Education in
Africa



Ministry of Education,
Literacy and National
Languages of Mali



World Bank



Education International
Internationale de l'Éducation
Internacional da Educação
Bildungsinternationale

Trends in primary school enrollment since 2004

Jean-Pierre Jarousse
UNESCO-BREDA Pôle de Dakar

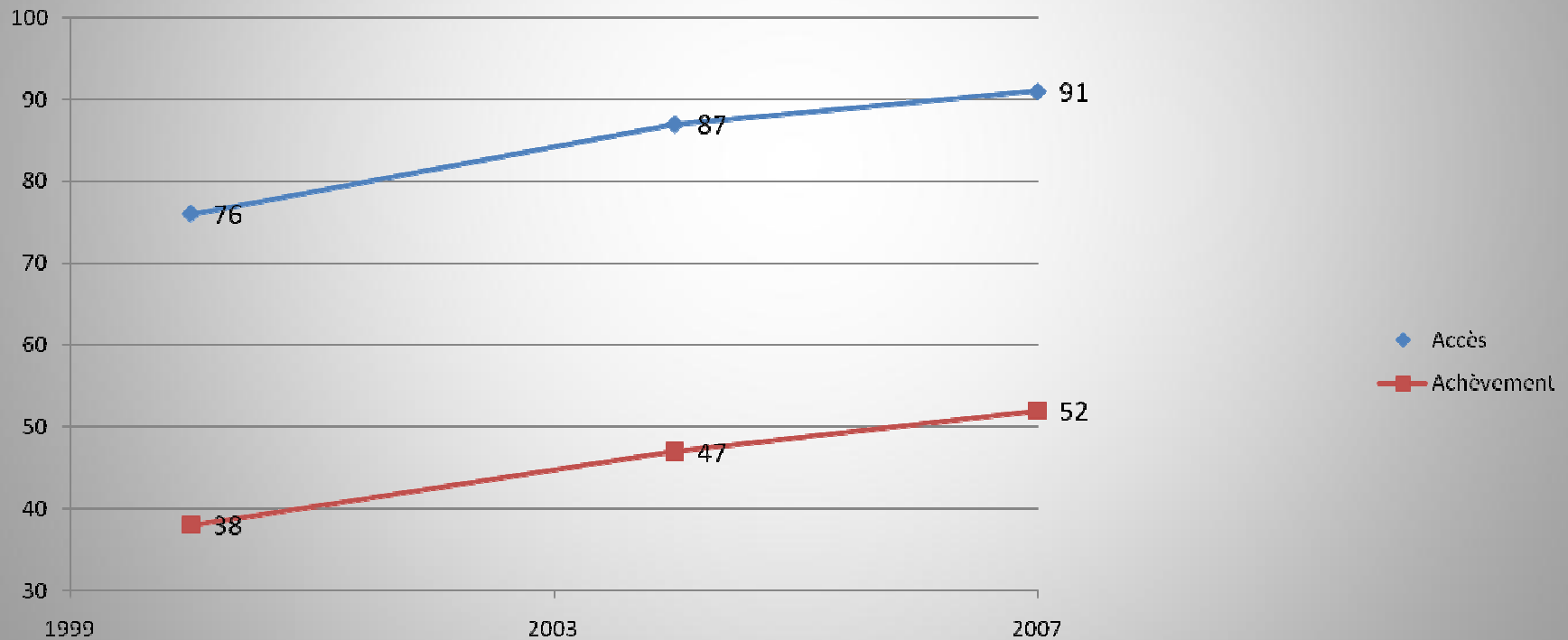
Bamako + 5 Conference on contractual
teachers

27-29 October 2009, Bamako, Mali

- **Enrollment rates**
 - The increase in access has slowed since 2004
 - Linear trend in the completion rate, which remains relatively low
- **Number of teachers needed to achieve UPE**
 - The number to be recruited is equal to 128% of the current teaching force
- **Teacher wage bill**
 - On average 3.8% of per capita GDP...
 - ...due to disparities in status and compensation
- **Financing**
 - Continued mobilization of national resources (+1% of GDP on average)
 - High outlays by families, paradoxically greater at the lower levels of the education system
- **Individual country situations vary widely around these average values**

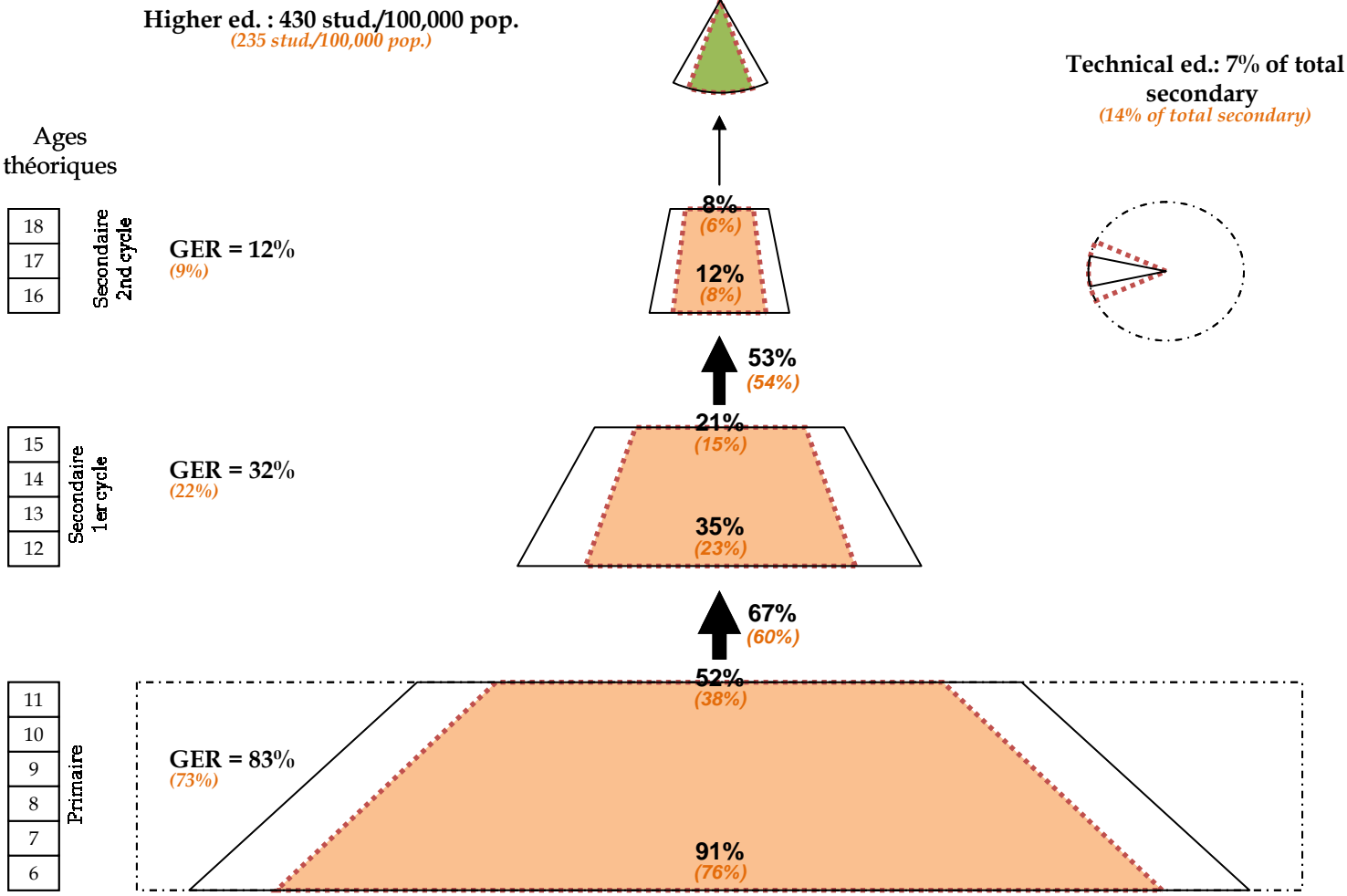
ENROLLMENT

Access and completion rates



Change in enrollment structure between 2000/2001 and 2006/2007 (for the 12 countries present in Bamako in 2004)

Bamako + 5 countries: 2006/2007 (2000/2001)



Change in enrollment structure between 2003/2004 and 2006/2007 (for the 12 countries present in Bamako in 2004)

Bamako + 5 countries (2006/2007) (2003/2004)

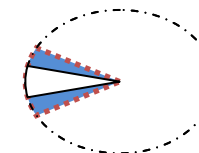
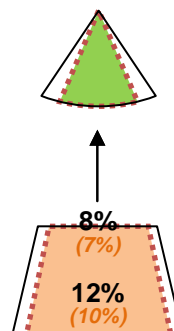
Higher ed.: 430 stud./100,000 pop.
(293 stud./100,000 pop.)

Technical ed.: 7% of total secondary
(16% of total secondary)

Ages théoriques

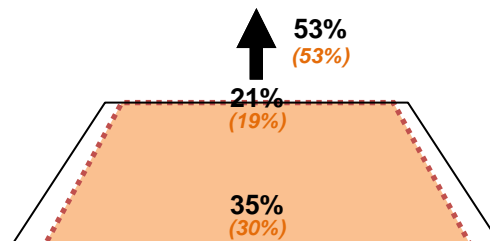
18	Secondaire 2nd cycle
17	
16	

GER = 12%
(11%)



15	Secondaire 1er cycle
14	
13	
12	

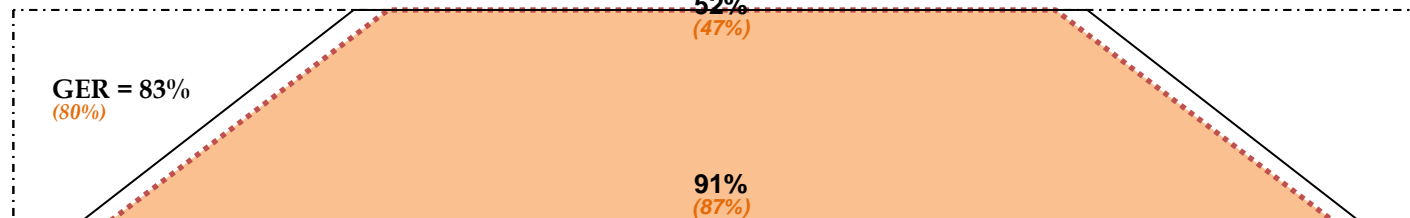
GER = 32%
(28%)



53%
(53%)

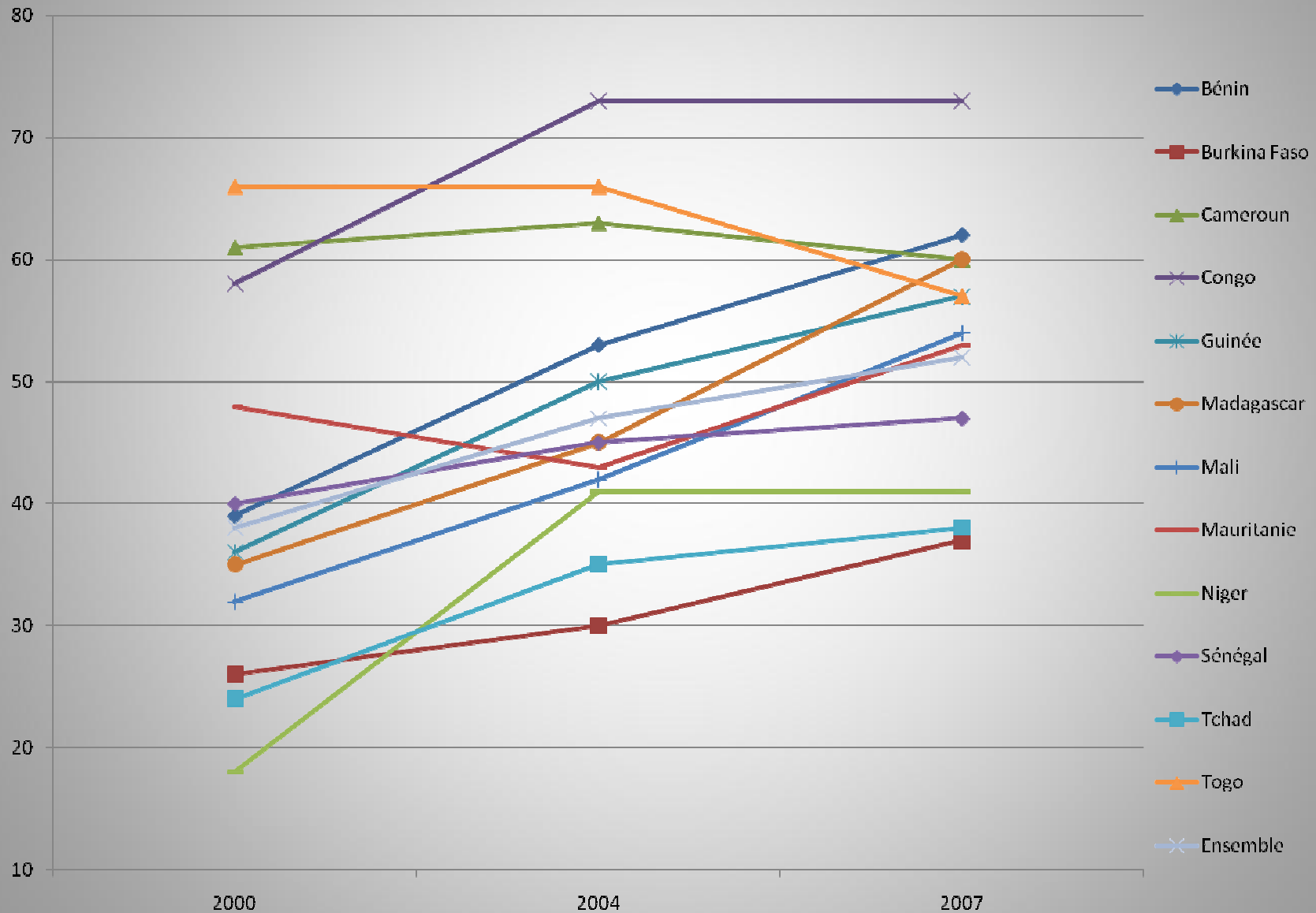
11	Primaire
10	
9	
8	
7	
6	

GER = 83%
(80%)



67%
(66%)

Primary education completion rate, 2000-2007



TEACHER REQUIREMENTS

Number of teachers required

- For the 41 African countries covered by the Pôle de Dakar's study on the teacher issue:
 - Current no. of teachers: 2.9 million
 - New posts: 1.7 million
 - Replacements: 0.7 million

Recruitment of 2.4 million teachers required to reach UPE (82% of the current stock)

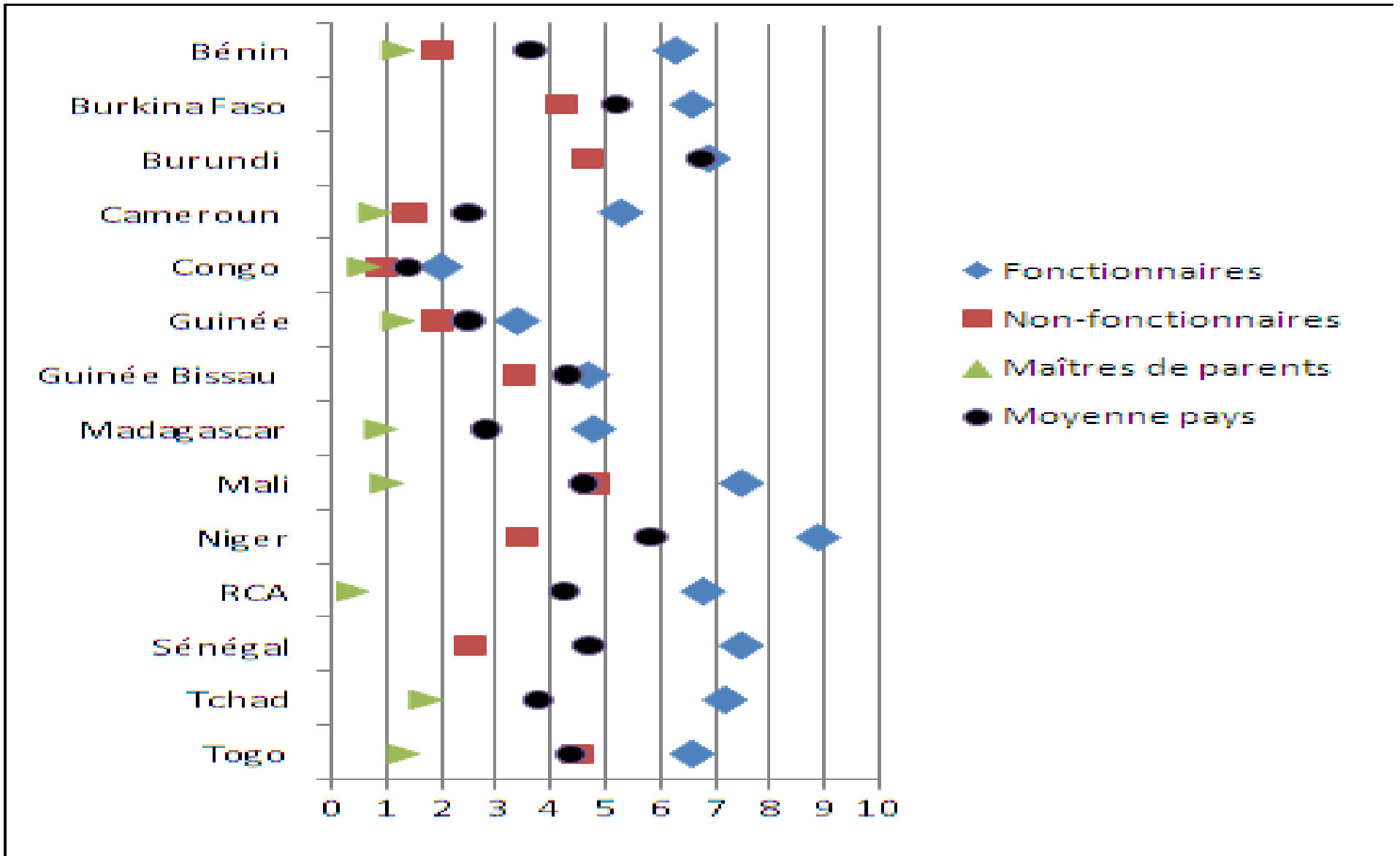
- For the 12 countries present in Bamako in 2004:
 - Current no. of teachers: 399,400
 - New posts: 334,000
 - Replacements: 177,000
- Recruitment of 511,000 teachers required to reach UPE (128% of the current stock)

Number of teachers needed to reach UPE

Pays	effectifs actuels (1)	Besoins en nouveaux postes	Besoins attrition	Recrutements totaux d'ici SPU (2)	Rapport (2)/(1)
Burkina Faso	30723	59948	19771	79719	2,59
Cameroun	67081	26112	36540	62652	0,93
Madagascar	76831	17589	28847	46436	0,6
Mali	28964	39620	15636	55256	1,91
Mauritanie	11252	5500	5059	10559	0,94
Niger	28163	66829	18856	85685	3,04
Sénégal	37767	29132	17836	46968	1,24
Tchad	19989	34219	9186	43405	2,17
Bénin	31103	19189	7630	26819	0,86
Congo	11260	5631	3656	9287	0,82
Guinée	28296	20512	7961	28473	1,01
Togo	28003	9763	5767	15530	0,55
Ensemble	399432	334044	176744	510788	1,28

TEACHER WAGE BILL

Teachers' compensation (GDP/cap.)



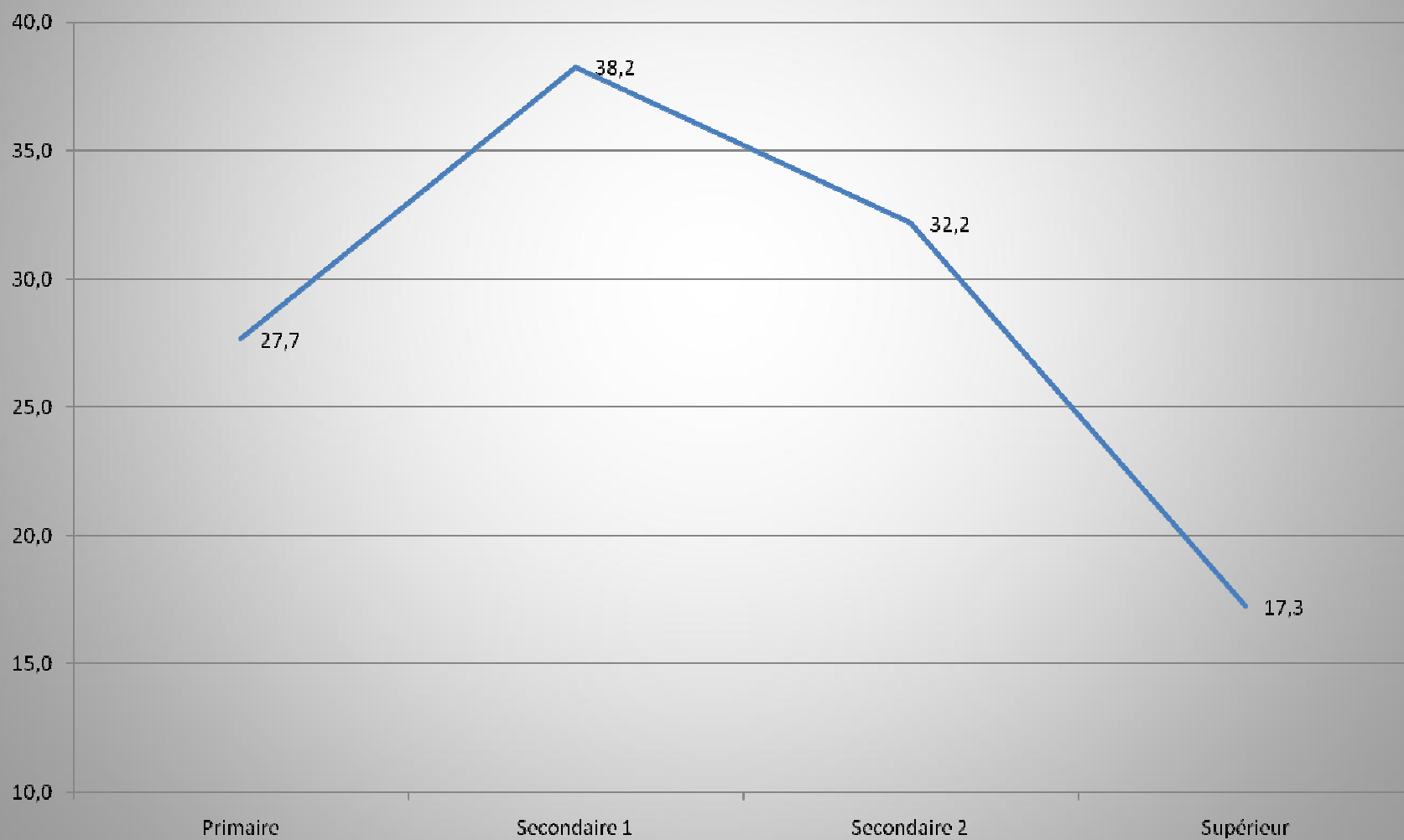
FINANCING

Public spending on education (% of GDP)

- Increased domestic financing effort (increase in the total resources and priority given to education)
- Slight decline in the share of primary education over the period (50 to 48%)

Pays	2003	2006
Bénin	3,7	4,3
Burkina Faso	2,4	2,8
Cameroun	3,0	2,8
Congo	2,7	4,2
Guinée	2,0	1,8
Madagascar	2,5	3,2
Mali	2,7	4,5
Mauritanie	5,3	4,4
Niger	2,6	3,2
Sénégal	3,6	4,4
Tchad	0,9	3,5
Togo	2,7	4,3
Ensemble	3,1	4,0

Share of household expenditure in total education expenditure



Share of household education expenditure in total education expenditure

Pays	Primaire	Secondaire 1	Secondaire 2	Supérieur
Bénin	26,7	60,9	57,9	23,2
Burkina Faso	25,6	66,7	50,0	21,8
Cameroun	49,2	50,2	57,0	33,6
Congo	27,5	36,2	17,0	5,6
Madagascar	40,5	44,0	40,4	27,9
Mali	16,3	10,4	6,1	2,9
Mauritanie	23,5	21,0	23,8	28,4
Niger	8,5	17,8	22,6	10,8
Sénégal	17,0	46,5	17,4	14,3
Tchad	24,7	25,9	24,9	8,5
Togo	44,8	41,1	36,8	12,9
Moyenne	27,7	38,2	32,2	17,3

Thank you for your attention!

www.poledakar.org